

# SHEER PERFECTION

THE CHOICE OF THE VEIL DEPENDS ON THE BRIDE'S FEATURES, HER GOWN, HAIRSTYLE AND HEADPIECE TO THE FORMALITY OF THE CELEBRATION, THE LOCATION AND EVEN THE WINDFACTOR. THERE ARE HEAPS TO CONSIDER.

## GATHERED (OR POUF) VEIL

A gathered veil can be any length. The more gathers, the more volume and hence a more dense look. While a gathered veil is dramatic, it can overwhelm a petite bride however, a gathered veil can offset a fuller silhouette.



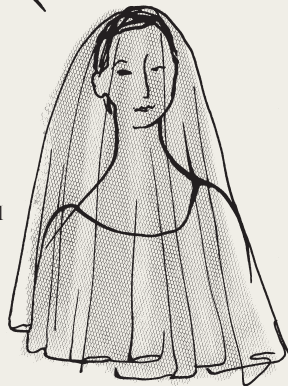
## PETAL (OR BIRDCAGE) VEIL

Short—grazing the shoulder or above—slightly gathered, or flat and circular, a petal veil is split down the centre front with a square or rounded edge. It works with a tailored suit, cocktail dress or a formal wedding gown. A bride may switch from a long veil to a petal veil for the reception.



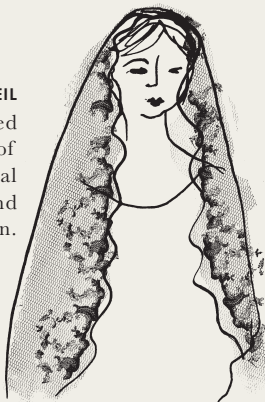
## CIRCULAR (OR DROPPED) VEIL

A circular veil is a flat piece of tulle; it adds volume but not height. Sheer and sensuous, a floor-length circular veil accentuates the bride's silhouette. The cut can also be oval, square or rectangular. A circular veil worn under a headpiece looks subtle and graceful, it can be layered with a gathered veil for volume.



## MANTILLA VEIL

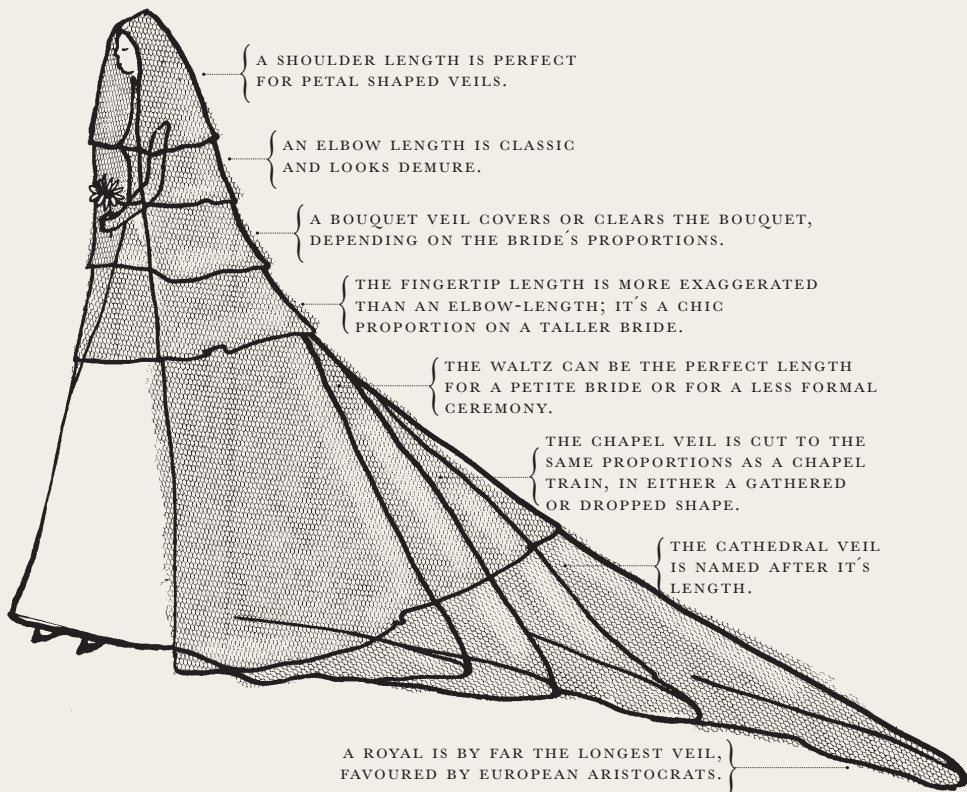
A mantilla veil is a dropped veil that is often made out of lace. It works well as a focal point with an unadorned and simple gown.



FASHION

DELIGHTFUL EMBELLISHMENTS REALLY CREATE A VEIL LIKE NO-ONE ELSE'S AND ADD DREAMY BEAUTY. SUPERB DETAILS CAN VARY FROM LACE APPLIQUÉS, DELICATE PEARL BEADING, RHINESTONES, AND CRYSTALS TO NARROW RIBBONS AND BIAS CUT TRIM. MINIATURE SILK FLOWERS WITH JEWELLED CENTRES CAN BE SCATTERED ALL OVER; A HAND-EMBROIDERED VEIL LOOKS LUXURIOUS.

The long and the short of it...



ILLUSTRATIONS MELANIE TERRETT